

Event joining instructions

Energy monitoring and targeting Birmingham, Thursday 26th April 2018

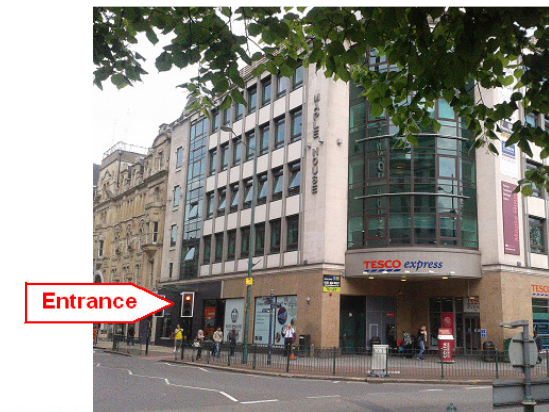
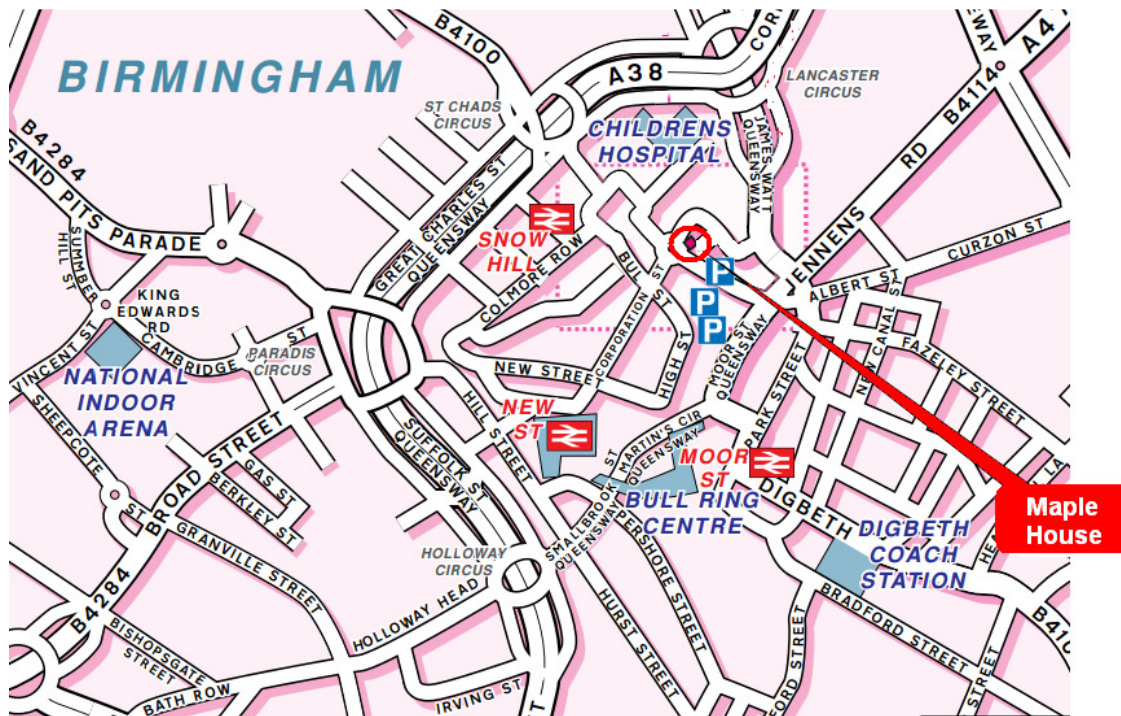
Venue: the workshop will be held at **etc.venues**, Maple House, 150 Corporation Street Birmingham, **B4 6TB** (directions overleaf)

Timings: the workshop will start promptly at **10:00** but we'll have coffee ready 30 minutes before. We will finish by 17:30.

Catering: Refreshments and lunch are included. If you have any special dietary requirements can you please let Vilnis Vesma know as soon as possible.

Other details: The workshop is small and informal. Handbooks will be provided; computers are not required but please bring a calculator.

Dress code: casual.



By rail: Maple House is 8 minutes' walk from New Street Station.

Parking: for those travelling by car, Birmingham Londonderry House NCP on Dalton Street B4 7LX is 2-3 minute's walk from the venue, and Birmingham High Street NCP (also known and signposted as Albert Street NCP) B4 7LN is a 4-5 minute walk. Maple House has reduced parking rates agreed at both.

Contact: prior to the event please contact Vilnis Vesma by email (vilnis@vesma.com) or call him on 0777 378 1427. If you need to call after 10:00 on the day please phone the venue's reception on 0121 212 8200 and ask them to pass on a message.